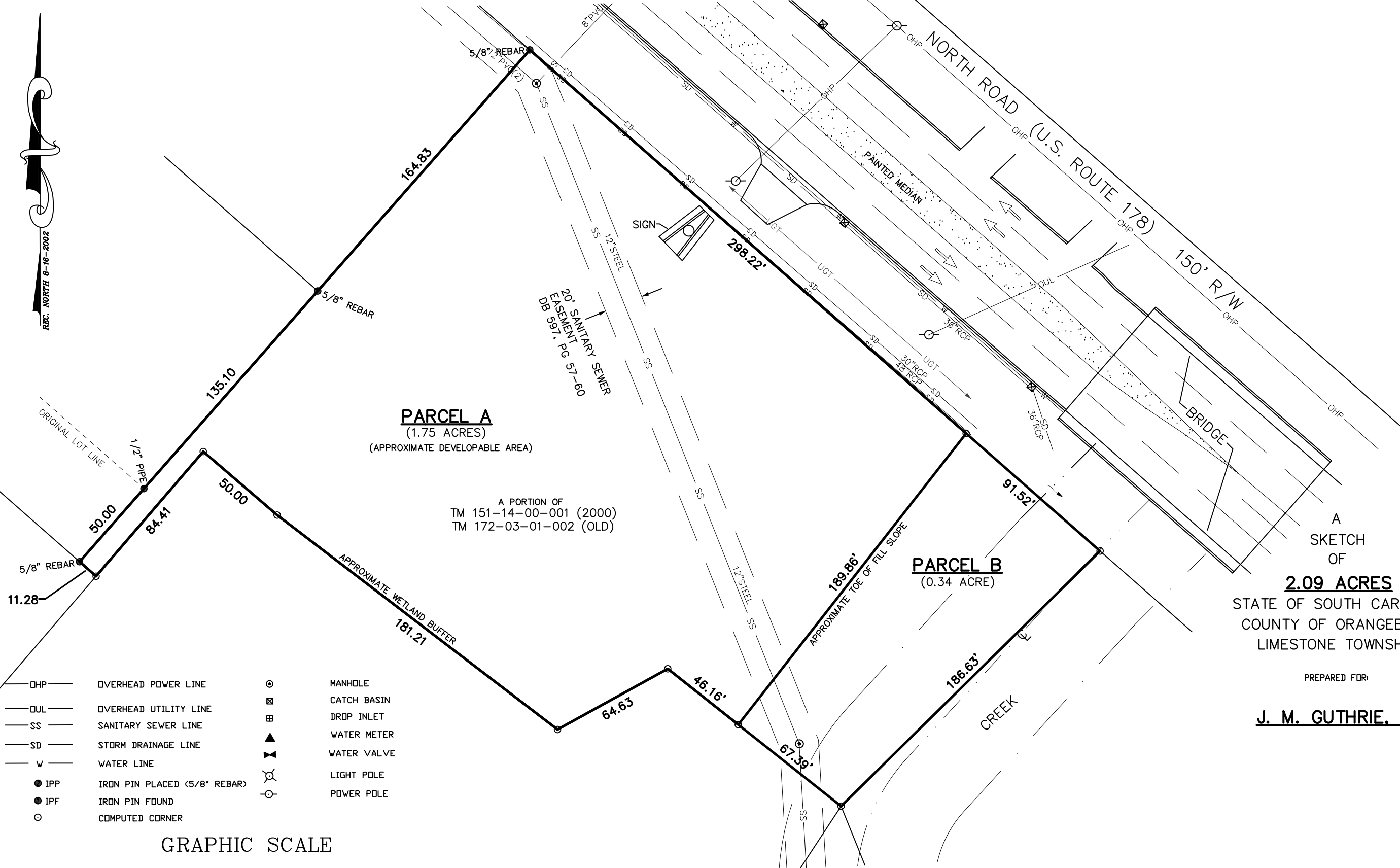


CARLSON P:\land Projects\2004\16458\dwg\16458rev3.dwg 1/17/2017 9:26:29 AM (JJJ)



PARCEL A
(1.75 ACRES)
(APPROXIMATE DEVELOPABLE AREA)

A PORTION OF
TM 151-14-00-001 (2000)
TM 172-03-01-002 (OLD)

PARCEL B
(0.34 ACRE)

A
SKETCH
OF
2.09 ACRES
STATE OF SOUTH CAROLINA
COUNTY OF ORANGEBURG
LIMESTONE TOWNSHIP

PREPARED FOR:

J. M. GUTHRIE, III

- | | | | |
|---------|------------------------------|---|-------------|
| — OHP — | OVERHEAD POWER LINE | ⊙ | MANHOLE |
| — OUL — | OVERHEAD UTILITY LINE | ⊠ | CATCH BASIN |
| — SS — | SANITARY SEWER LINE | ⊞ | DROP INLET |
| — SD — | STORM DRAINAGE LINE | ▲ | WATER METER |
| — W — | WATER LINE | ⊕ | WATER VALVE |
| ● IPP | IRON PIN PLACED (5/8" REBAR) | ⊙ | LIGHT POLE |
| ● IPF | IRON PIN FOUND | ⊙ | POWER POLE |
| ○ | COMPUTED CORNER | | |

GRAPHIC SCALE



(IN FEET)
1 inch = 50 ft.

REVISED: JANUARY 17, 2017
REVISED: JUNE 5, 2009
DATE: APRIL 8, 2009

16458rev3.DWG

EDISTO ENGINEERS & SURVEYORS, INC.

PO BOX 1725 ORANGEBURG, SOUTH CAROLINA 29116

16458-2215-1 B